

# Innovative Flooring to fit our West Australian Lifestyle

woodpecker  
flooring

# Contents

About Us	3
European Oak	6
Hampton Range	7
Signature Oak	15
Signature Herringbone	27
Coswick Series	35
Australian Hardwoods	62
Blackbutt	63
Manjimup Jarrah	67
N.S.W Spotted Gum	77
Solid French Oak	86
Plank	87
Parquetry	89
Vinyl	96
V Tech Hybrid	97



Inspired  
by architects,  
admired by West  
Australians.



# About Us

As a family-owned Western Australian business, Woodpecker has an innate understanding of the local building industry. Over the past 15 years we have developed a range of products that is uniquely suited to the demands of this diverse market and currently stock over 100 products locally.

Our involvement in every aspect of the manufacturing process guarantees quality, and it is our local support from the time of specification, at installation, and beyond that really sets us apart. Consistently delivering great results for projects large and small has made us the first choice for architects, builders, developers and homeowners.

We are delighted to introduce our 2021 product catalogue and a sampling of the incredible work completed with our products over the past 12 months.







European Oak

# Hampton Range

Our longest running range of European Oak and a favourite amongst builders, the Hampton Range is defined by its versatility. Available in 8 different colour schemes, it suits installations of all kinds, having been used across Perth in yoga studios, restaurants, offices, and of course, countless family homes. We have refined the colours and specifications of this range so the finished product showcases genuine European Oak at an approachable price point.

The base of this board features a multi-layer plywood construction for a lifetime of stability that is backed up by a warranty to match. Every board is coated with European made sealers and topcoats to create a floor that is hard wearing and easy to maintain.

## Product Specification

<b>Structure</b> Engineered	<b>Width</b> 190mm
<b>Surface Finish</b> Lacquer   UV Oil	<b>Length</b> Random up to 1900mm
<b>Edge</b> Bevelled	<b>Profile</b> Tongue & Groove
<b>Thickness</b> 12mm	<b>Pack Size</b> 2.888m²



<b>Project</b> Stirling Street Student Housing	<b>Colour</b> Balboa
<b>Builder</b> BGC	<b>Architect</b> MJA Studio





Stony Brook



Bayside



Balboa



Malibu



Havanna



Del Mar



Marina



Seashell



Longbeach



Tupelo Honey



Project Abbett Haus

Builder Passiv Building Co.

Colour Del Mar

Architect LAHAUS Interior Design Studio





CASE STUDY

Scarborough  
Residence 2.0

Range	Hampton Range
Colour	Seashell
Finish	UV Oil
Design	Hatch Interiors
Length	Random up to 1900mm
Width	190mm
Thickness	12mm
Edge	Bevelled







CASE STUDY

Saruda  
Residence

Range	Hampton Range
Colour	Marina
Finish	UV Oil
Design	Kristin Adams
Length	Random up to 1.9m
Width	190mm
Thickness	12mm
Edge	Bevelled



# Signature Oak

The original premium range of European Oaks, these boards are designed to provide architects and interior designers with ample options and bring life to projects. This range has been researched and developed over years of collaboration with Perth’s leading architects and interior designers. There are over 20 different colour schemes available, including three unfinished options allowing you to endlessly customise the finished product.

All pre-finished boards are treated with European made coatings that are specifically selected for their ability to accentuate the boards natural features and provide a hard-wearing finish. The lifespan of the boards is further improved by a full 4mm top lamella of genuine solid European Oak that can be sanded and refinished, with the structural stability of a hardwood multi plywood base.

The quality of these boards makes them suitable for both residential and commercial installations and are backed up by a lifetime structural warranty for all residential applications.

## Product Specification

<b>Structure</b> Engineered
<b>Surface Finish</b> Lacquer   Oil & Hardwax   Unfinished
<b>Edge</b> Bevelled   Square
<b>Thickness</b> 15mm   21mm

<b>Width</b> 150mm   170mm   190mm   220mm   230mm   320mm
<b>Length</b> Random up to 1900mm   2200mm   3800mm
<b>Profile</b> Tongue & Groove



<b>Project</b> Marketgrounds	<b>Colour</b> FU320 (Custom Stain)
<b>Builder</b> Utopia Industries	<b>Architect</b> Woods Bagot





<b>Colour</b> FU320
<b>Finish</b> Unfinished
<b>Edge</b> Bevelled
<b>Thickness</b> 21mm
<b>Width</b> 320mm
<b>Length</b> Random up to 3.8m
<b>Profile</b> Tongue & Groove



<b>Colour</b> Boston
<b>Finish</b> Lacquer
<b>Edge</b> Bevelled
<b>Thickness</b> 15mm
<b>Width</b> 220mm
<b>Length</b> Random up to 2.2m
<b>Profile</b> Tongue & Groove



<b>Colour</b> Blackberry
<b>Finish</b> Lacquer
<b>Edge</b> Bevelled
<b>Thickness</b> 15mm
<b>Width</b> 170mm
<b>Length</b> Random up to 1.9m
<b>Profile</b> Tongue & Groove



<b>Colour</b> Classic 150
<b>Finish</b> Lacquer
<b>Edge</b> Bevelled
<b>Thickness</b> 15mm
<b>Width</b> 150mm
<b>Length</b> Random up to 1.9m
<b>Profile</b> Tongue & Groove



<b>Colour</b> Classic Brushed 150
<b>Finish</b> Lacquer
<b>Edge</b> Bevelled
<b>Thickness</b> 14mm
<b>Width</b> 150mm
<b>Length</b> Random up to 1.9m
<b>Profile</b> Tongue & Groove



<b>Colour</b> Classic Brushed 190
<b>Finish</b> Lacquer
<b>Edge</b> Bevelled
<b>Thickness</b> 15mm
<b>Width</b> 190mm
<b>Length</b> Random up to 1.9m
<b>Profile</b> Tongue & Groove



<b>Colour</b> Cleanslate 150
<b>Finish</b> Unfinished
<b>Edge</b> Square Edge
<b>Thickness</b> 15mm
<b>Width</b> 150mm
<b>Length</b> Random up to 2.2m
<b>Profile</b> Tongue & Groove



<b>Colour</b> Cleanslate Select
<b>Finish</b> Unfinished
<b>Edge</b> Square Edge
<b>Thickness</b> 15mm
<b>Width</b> 190mm
<b>Length</b> Random up to 2.2m
<b>Profile</b> Tongue & Groove



<b>Colour</b> Smoked Linen
<b>Finish</b> Hardwax
<b>Edge</b> Bevelled
<b>Thickness</b> 15mm
<b>Width</b> 220mm
<b>Length</b> Random up to 2.2m
<b>Profile</b> Tongue & Groove



<b>Colour</b> Oatmeal Stout
<b>Finish</b> Lacquer
<b>Edge</b> Bevelled
<b>Thickness</b> 15mm
<b>Width</b> 220mm
<b>Length</b> Random up to 2.2m
<b>Profile</b> Tongue & Groove



<b>Colour</b> Moondance
<b>Finish</b> Lacquer
<b>Edge</b> Bevelled
<b>Thickness</b> 15mm
<b>Width</b> 220mm
<b>Length</b> Random up to 2.2m
<b>Profile</b> Tongue & Groove



<b>Colour</b> Adirondack
<b>Finish</b> Lacquer
<b>Edge</b> Bevelled
<b>Thickness</b> 15mm
<b>Width</b> 230mm
<b>Length</b> Random up to 2.1m
<b>Profile</b> Tongue & Groove



<b>Colour</b> Apollo
<b>Finish</b> Lacquer
<b>Edge</b> Bevelled
<b>Thickness</b> 15mm
<b>Width</b> 230mm
<b>Length</b> Random up to 2.1m
<b>Profile</b> Tongue & Groove



<b>Colour</b> Vermont
<b>Finish</b> Lacquer
<b>Edge</b> Bevelled
<b>Thickness</b> 15mm
<b>Width</b> 230mm
<b>Length</b> Random up to 2.1m
<b>Profile</b> Tongue & Groove



<b>Colour</b> Brushed Cocoa
<b>Finish</b> Lacquer
<b>Edge</b> Bevelled
<b>Thickness</b> 15mm
<b>Width</b> 220mm
<b>Length</b> Random up to 2.2m
<b>Profile</b> Tongue & Groove



<b>Colour</b> Cognac
<b>Finish</b> Lacquer
<b>Edge</b> Bevelled
<b>Thickness</b> 15mm
<b>Width</b> 190mm
<b>Length</b> Random up to 1.9m
<b>Profile</b> Tongue & Groove



<b>Colour</b> Driftwood
<b>Finish</b> Hardwax
<b>Edge</b> Bevelled
<b>Thickness</b> 15mm
<b>Width</b> 220mm
<b>Length</b> Random up to 2.2m
<b>Profile</b> Tongue & Groove



<b>Colour</b> Limewash
<b>Finish</b> Lacquer
<b>Edge</b> Bevelled
<b>Thickness</b> 15mm
<b>Width</b> 220mm
<b>Length</b> Random up to 2.2m
<b>Profile</b> Tongue & Groove

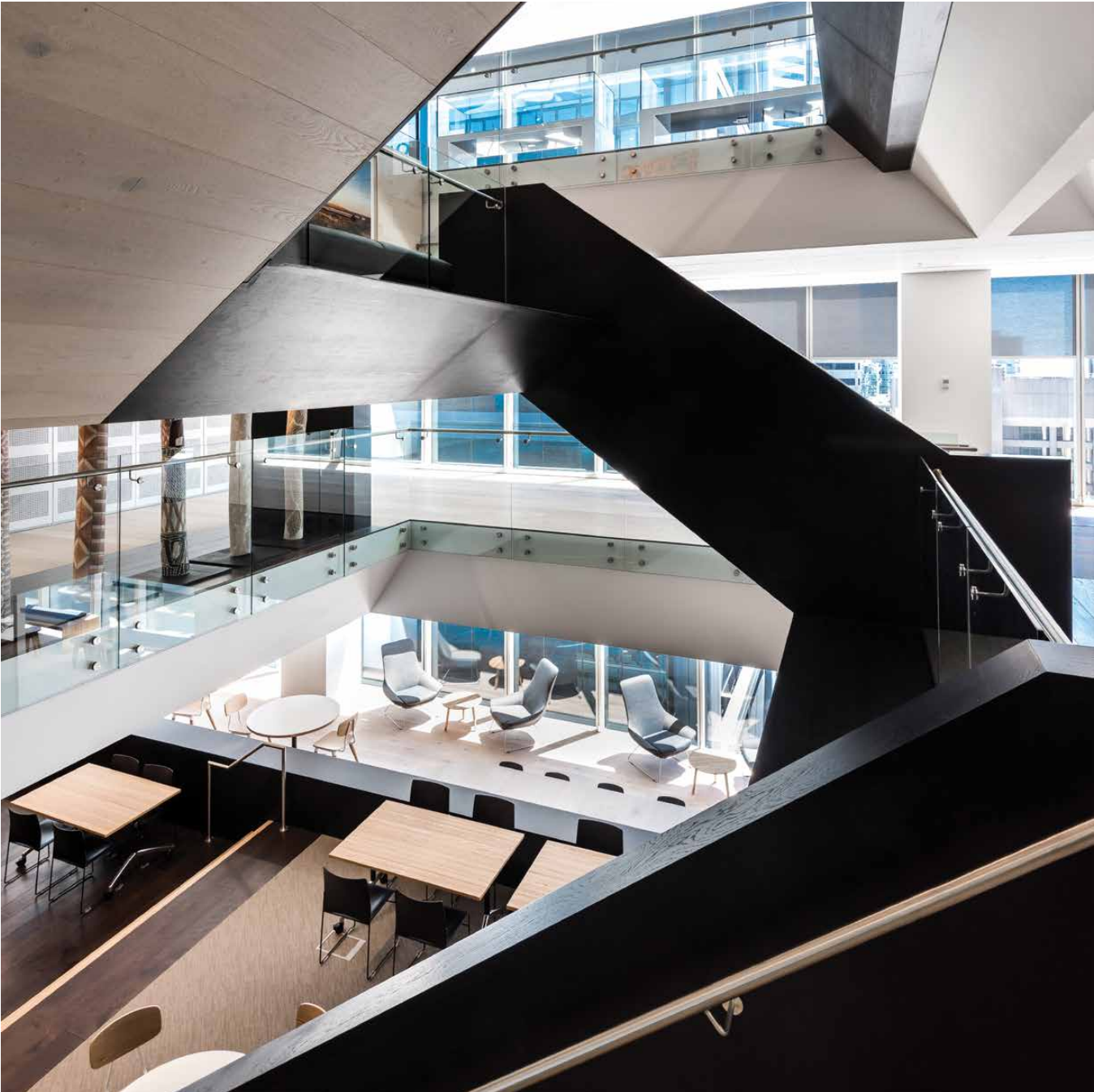


<b>Colour</b> Sandstorm
<b>Finish</b> Lacquer
<b>Edge</b> Bevelled
<b>Thickness</b> 15mm
<b>Width</b> 220mm
<b>Length</b> Random up to 2.2m
<b>Profile</b> Tongue & Groove



<b>Colour</b> Walnut
<b>Finish</b> Lacquer
<b>Edge</b> Bevelled
<b>Thickness</b> 15mm
<b>Width</b> 220mm
<b>Length</b> Random up to 2.2m
<b>Profile</b> Tongue & Groove

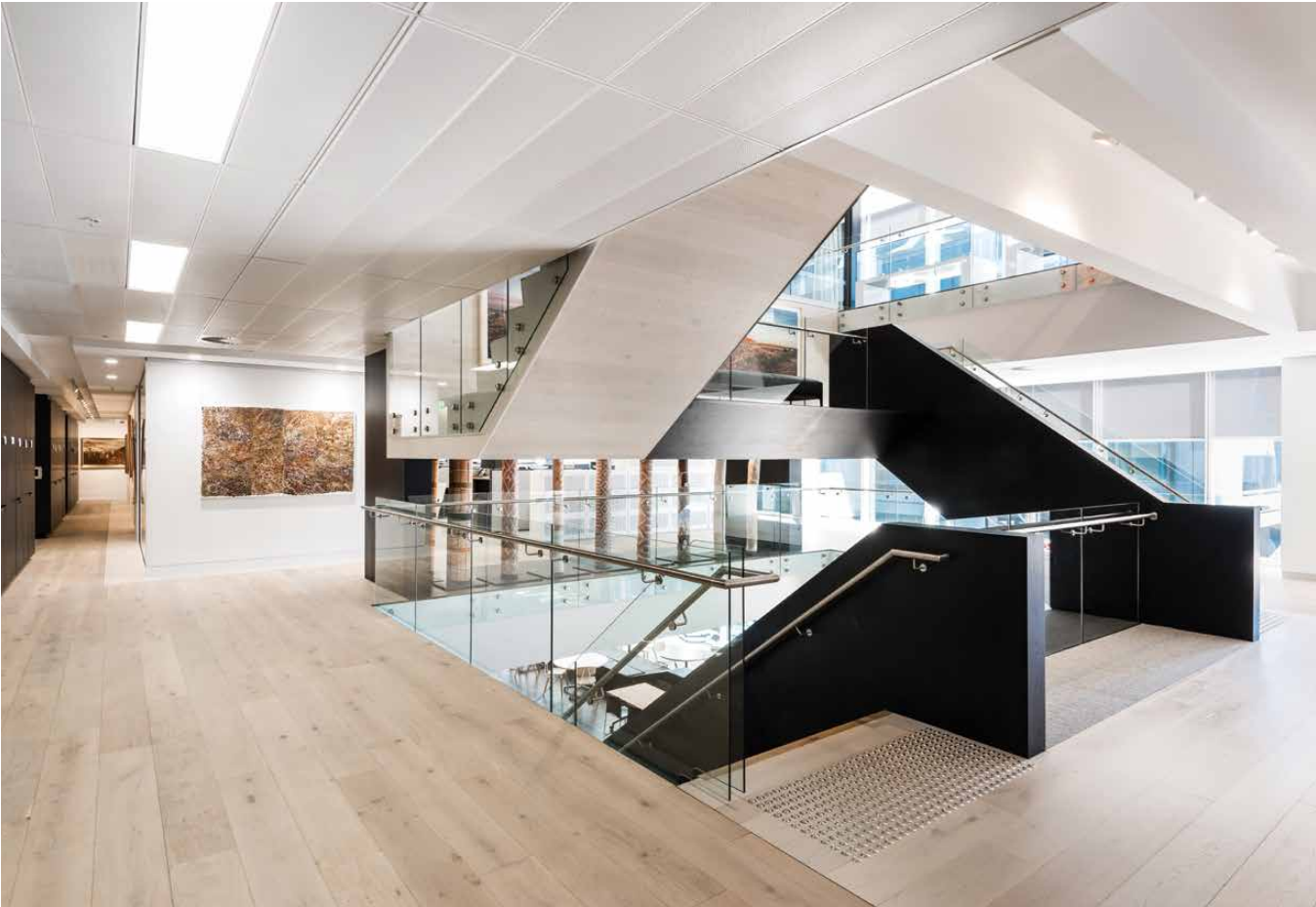




CASE STUDY

Wesfarmers  
Head Office

Range	Signature Oak Range
Colour	Apollo
Finish	Lacquer
Architect	Hassell
Builder	Northerly
Length	Random up to 2.1m
Width	230mm
Thickness	15mm
Edge	Bevelled







CASE STUDY

Overton  
Apartments

Range	Signature Oak Range
Colour	Cleanslate 220 (Custom Stain)
Finish	Lacquer
Architect	Banham Architects
Builder	Adrian Zorzi
Length	Random up to 2.2m
Width	220mm
Thickness	15mm
Edge	Square

2020 HIA Australian Apartment of the year



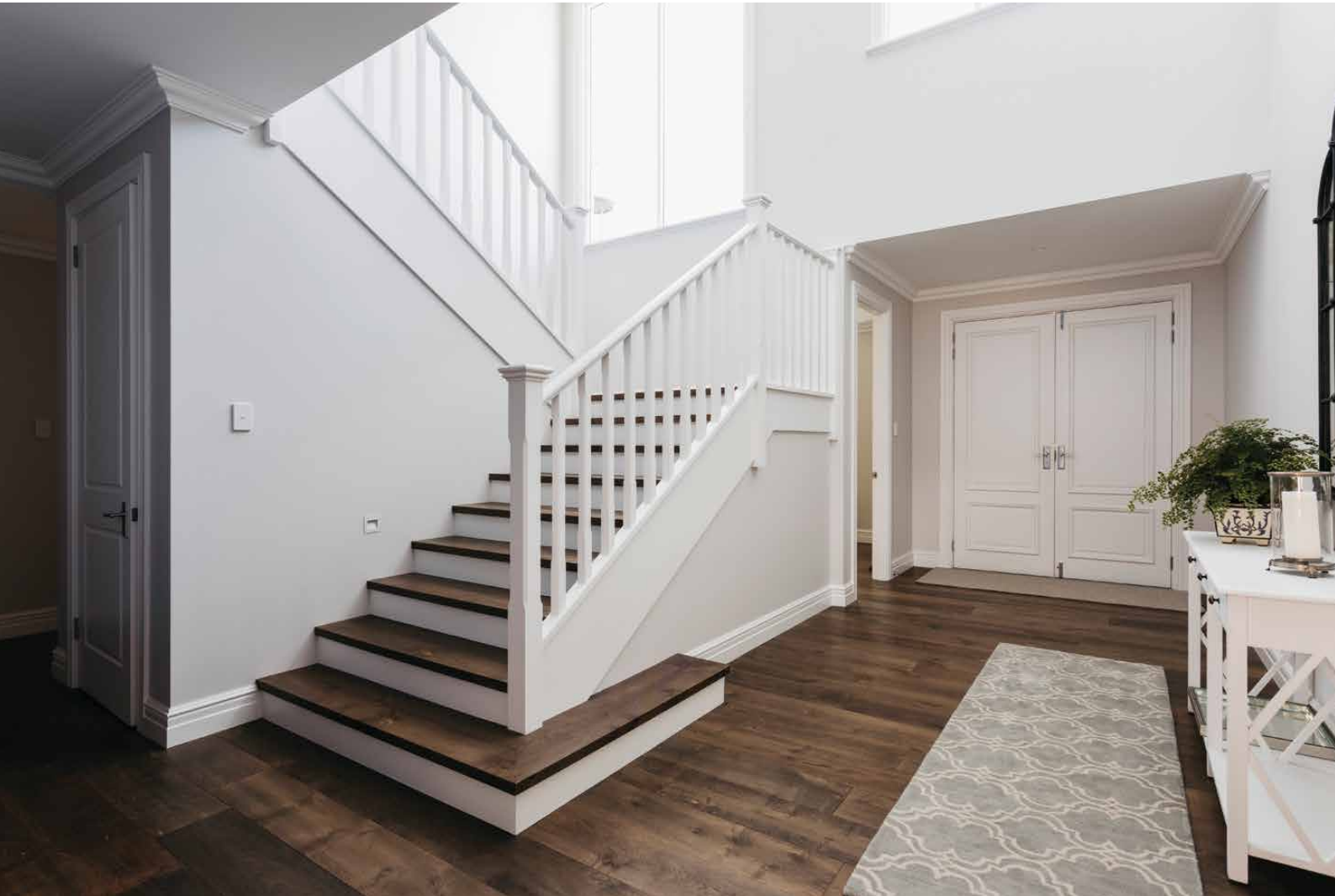




**CASE STUDY**

Dunsborough  
Residence

Range	Signature Oak Range
Colour	Oatmeal Stout
Finish	Lacquer
Interior Design	Tailorhouse, Justin Everitt Design
Builder	Holst Design & Build
Length	Random up to 2.2m
Width	220mm
Thickness	15mm
Edge	Bevelled







**Project** Mt Lawley Residence  
**Range** Signature Oak

**Colour** Moondance  
**Finish** Lacquer

**Architect** John Kestel Architects  
**Length** Random up to 2.2m

**Width** 220mm

**Thickness** 15mm

**Edge** Bevelled

# Signature Herringbone

When it comes to patterns in timber flooring, herringbone is simply timeless. A design with a long history, no other floor choice has the ability to transcend the gap between classic and contemporary. This collection is composed of a genuine European Oak that is finished in a selection of our six most popular Signature Oak Range colour schemes.

Matching precisely with their plank counterparts in the Signature Oak range, you can design spaces fluidly without transitions from plank to pattern.

## Product Specification

<b>Structure</b> Engineered	<b>Width</b> 80mm   *120mm
<b>Surface Finish</b> Lacquer   Oil & Hardwax	<b>Length</b> 560mm   *600mm
<b>Edge</b> Bevelled	<b>Profile</b> Tongue & Groove
<b>Thickness</b> 15mm	<b>Pack Size</b> 0.448m²   *1.44m²



<b>Project</b> McGrath Nicol Head Office	<b>Colour</b> Oatmeal Stout
<b>Product</b> Signature Herringbone	<b>Interior Design</b> IA Design Group





Vermont



Oatmeal Stout



Smoked Linen



Adirondack



Apollo



Project Allendale Square

Product Signature Herringbone

Colour Smoked Linen

Interior Design IA Design Group





CASE STUDY

Marmion  
Residence

Range	Signature Herringbone
Colour	Oatmeal Stout
Finish	Lacquer
Length	560mm
Width	80mm
Thickness	15mm
Edge	Bevelled







CASE STUDY

Mt Pleasant  
Residence 2.0

Range	Signature Herringbone
Colour	Boston (custom Stain)
Finish	Lacquer
Length	900mm
Width	150mm
Thickness	15mm
Edge	Bevelled



# Coswick Series

The pinnacle of timber flooring solutions, the Coswick Series is the culmination of 25 years of dedication to crafting the finest timber flooring. Completely designed and made in Europe, the entire manufacturing process is integrated – starting with saw log processing all the way to final stains and finishes.

We are proud to be the exclusive supplier to WA for the Coswick Series, sharing their incredible passion for quality. World renowned for their cutting edge design solutions, the product has been used in high profile projects around the world and was the flooring of choice for the landmark Ritz Carlton completion in New York City.

We stock 13 Coswick options locally for projects that require a quick turnaround time. With more generous lead times, we can also fully customise the Coswick Series offering more colours, herringbone or chevron, grading selections and board thicknesses. It is truly a revolutionary development in the ability build a floor specification to match even the most exacting requirements.

## Product Specification

<b>Structure</b> Engineered
<b>Surface Finish</b> Silk Oil   Silk Oil Ultra Matte
<b>Edge</b> Mirco Bevelled
<b>Thickness</b> *15mm   19mm

<b>Width</b> 190mm
<b>Length</b> Random up to 2.1m
<b>Profile</b> Tongue & Groove
<b>Pack Size</b> *2.26m <sup>2</sup>   1.86m <sup>2</sup>



<b>Project</b> Cottesloe Residence
<b>Product</b> Coswick Series

<b>Colour</b> Ginger
<b>Finish</b> Silk Oil





Straw



Grey Wood



Titanium Buff



Raw Sienna



Ginger



Barcelona



Batiste



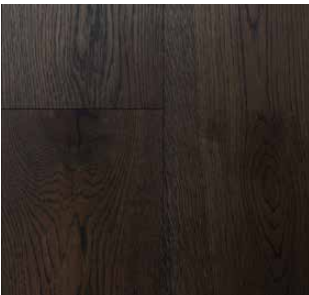
Cinnamon



Marseille



Natural



Old Venice



Pastel



Snowdrop



Vanilla



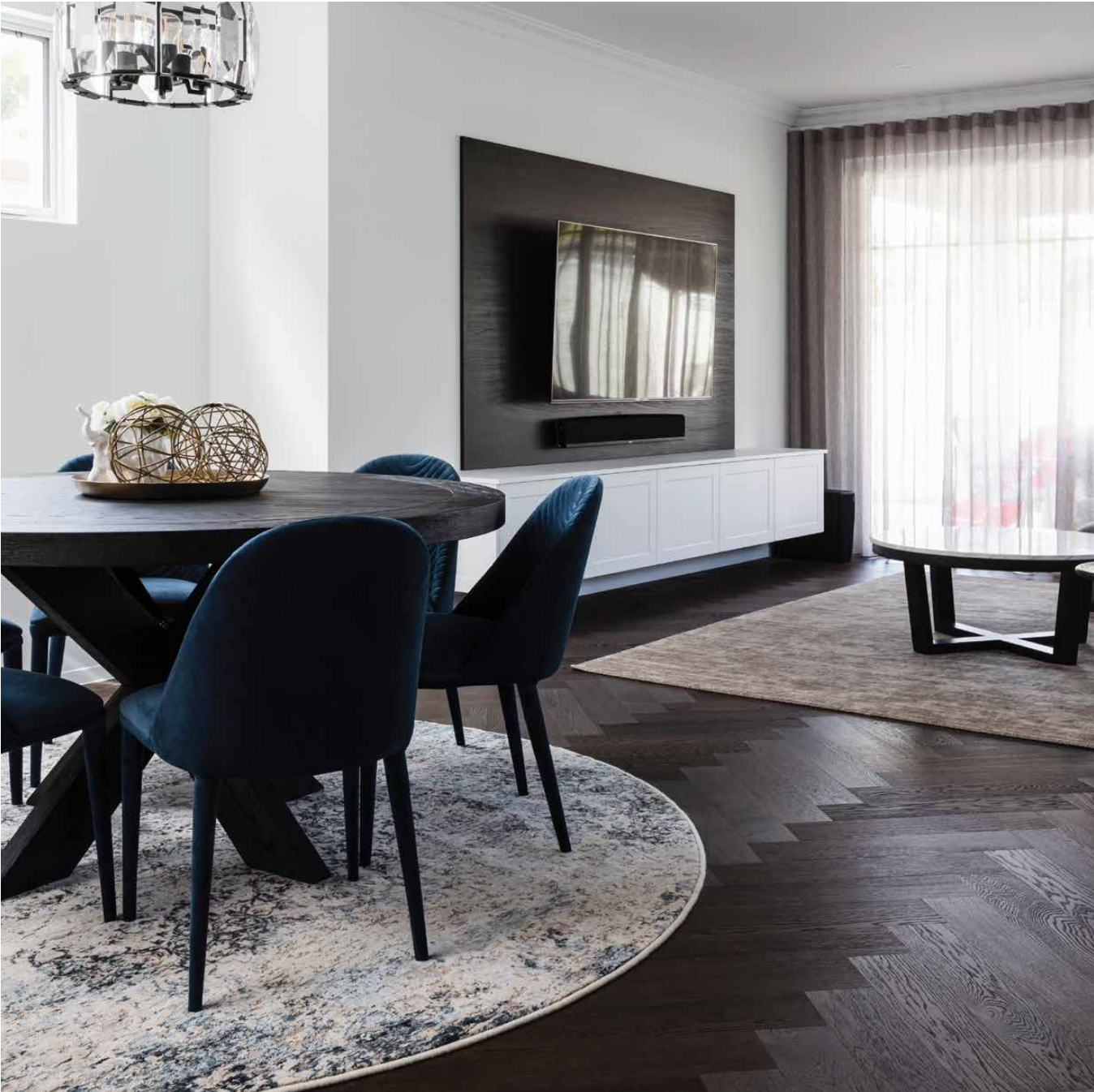
Project Duncraig Residence

Product Coswick Range

Colour Vanilla

Finish Silk Oil Ultra Matte

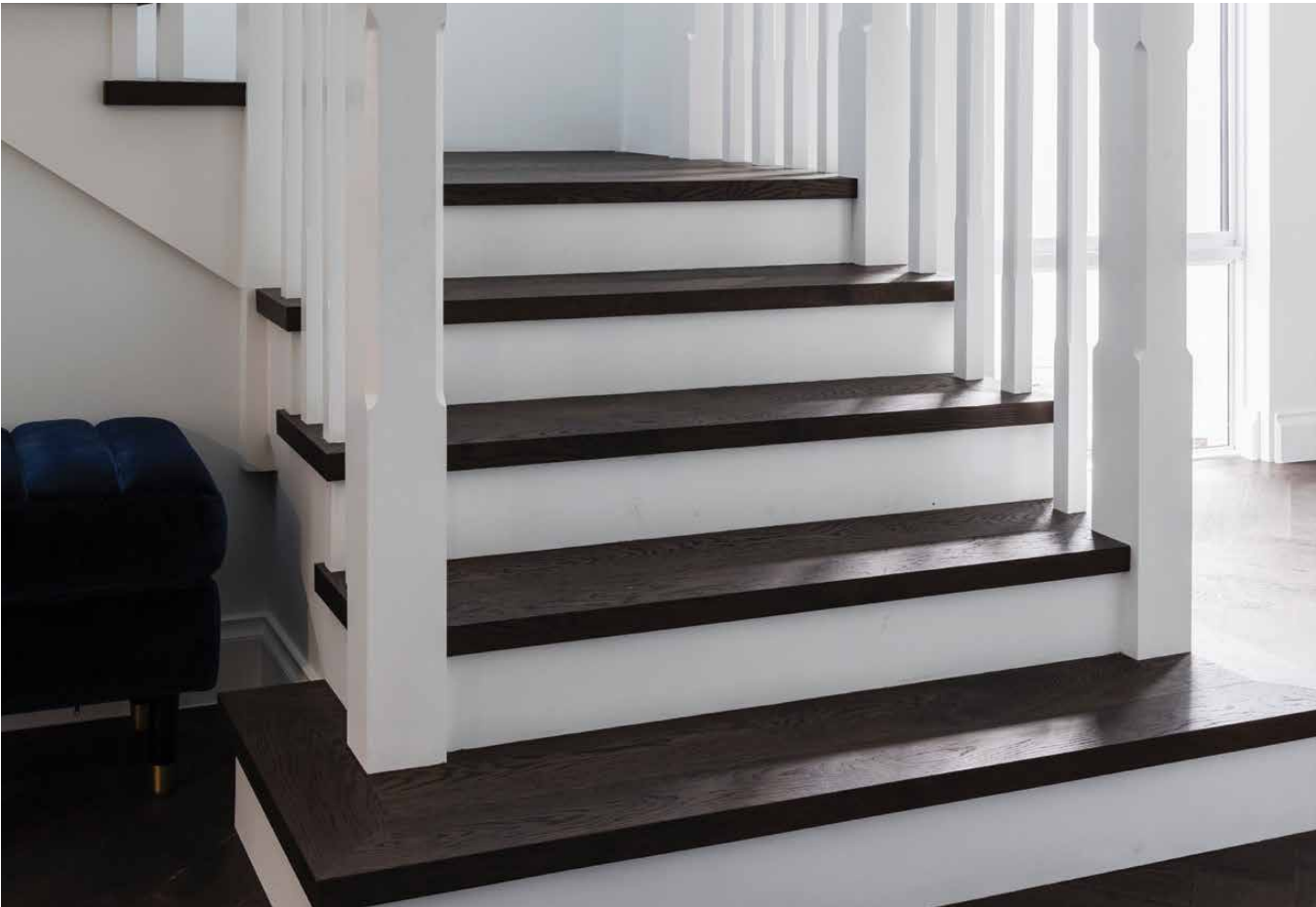




CASE STUDY

Churchlands  
Residence

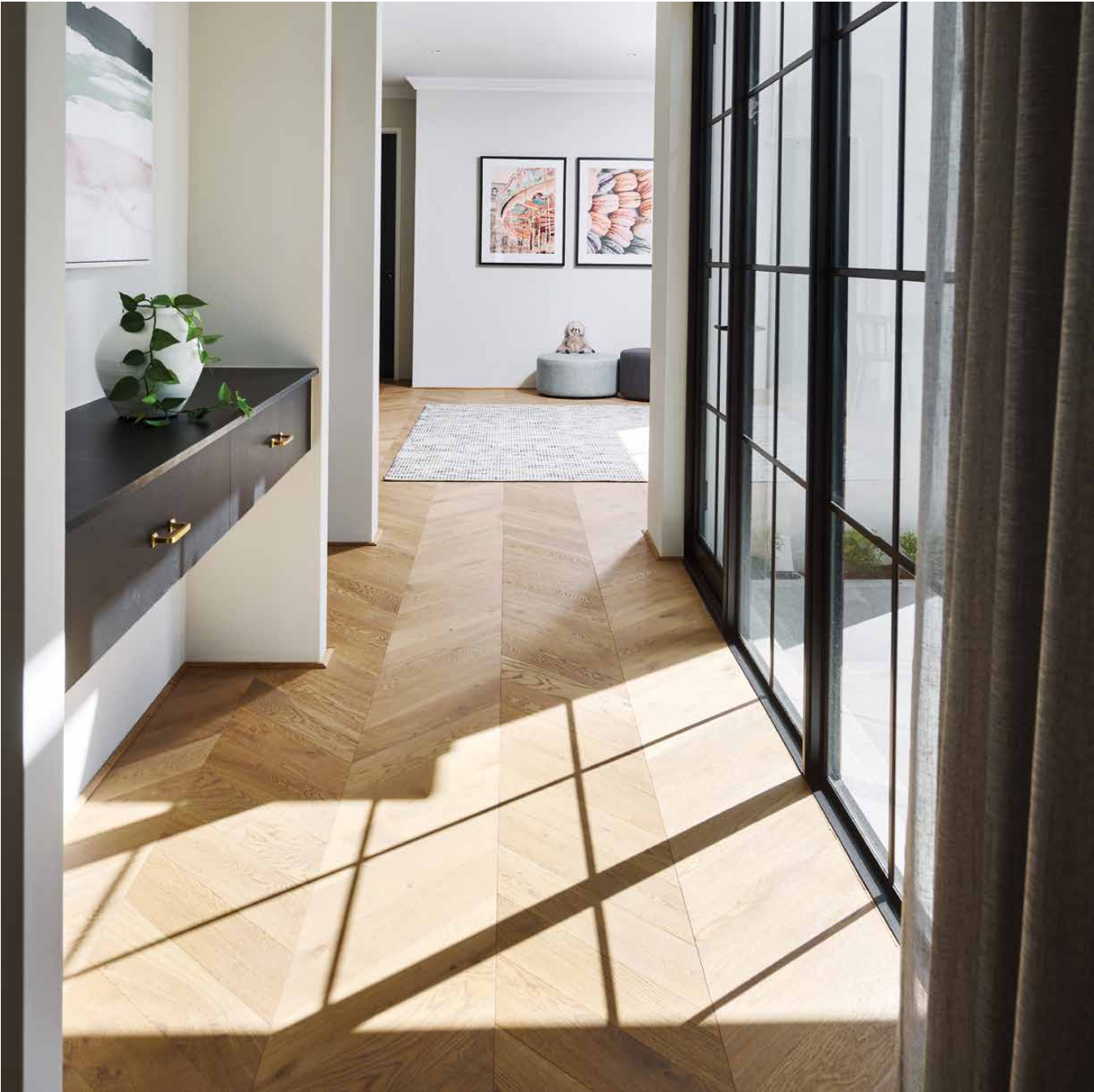
Range	Coswick Series
Colour	Old Venice
Finish	Silk Oil Ultra Matte
Interior Design	13 Interiors
Builder	Project Homes
Pattern	Herringbone Parquetry
Length	635mm
Width	127mm
Thickness	19mm
Edge	Micro Bevelled











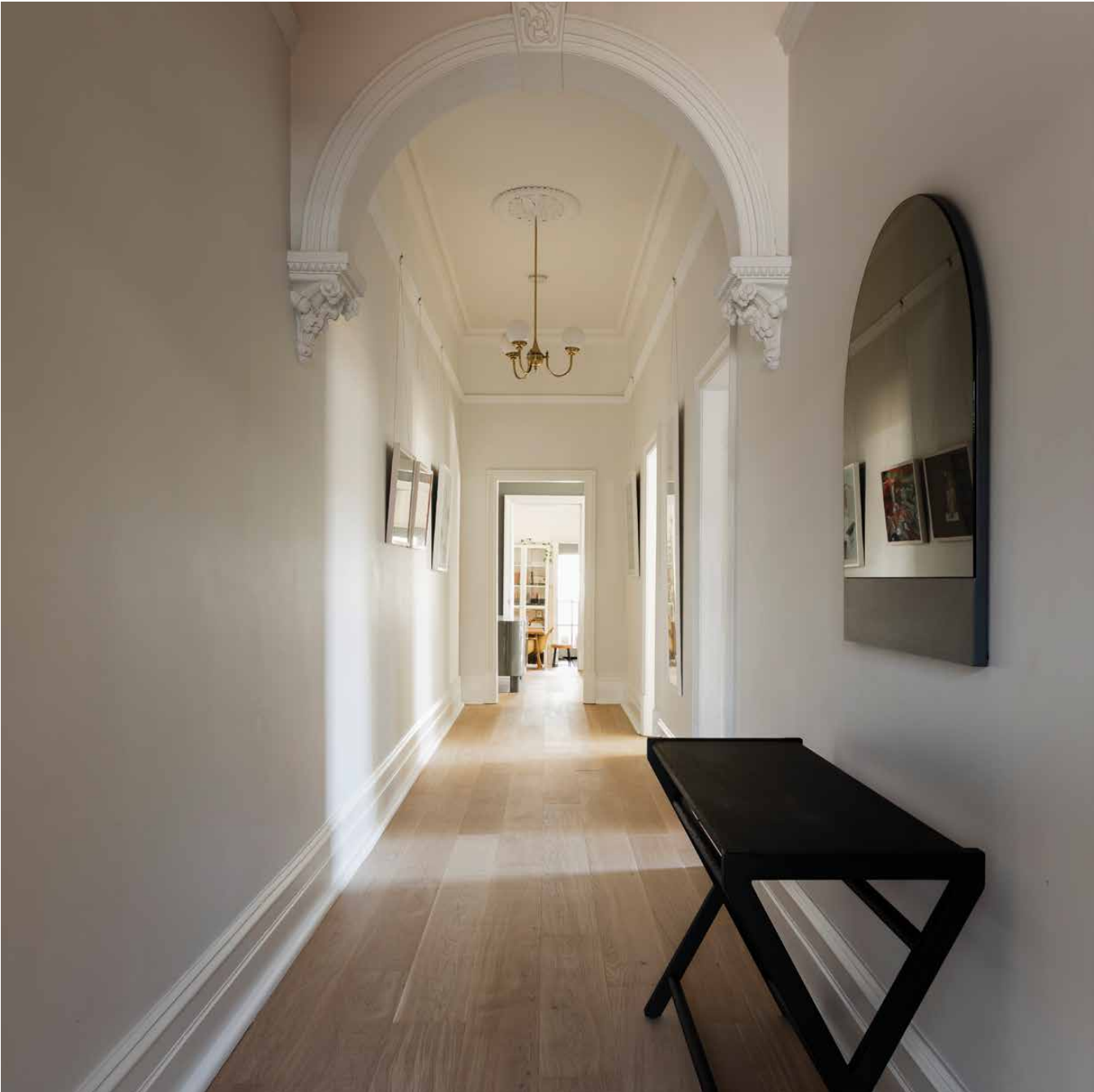
CASE STUDY

The Amour

Range	Coswick Series
Colour	Pastel
Finish	Silk Oil
Interior Design	Melissa Redwood
Builder	Webb & Browne-Neaves
Pattern	Chevron Parquetry
Length	500mm
Width	127mm
Thickness	19mm
Edge	Micro Bevelled







CASE STUDY

Fremantle  
Residence

Range	Coswick Series
Colour	Vanilla
Finish	Silk Oil Ultra Matte
Interior Design	Templewell
Length	Random up to 2.1m
Width	190mm
Thickness	19mm
Edge	Micro Bevelled











# Australian Hardwoods



# NSW Blackbutt

Year in and year out, Blackbutt wins the Australian timber popularity contest. Featuring an appealing light tone and subtle mix of colours, it is endlessly versatile with different types of design. Like most Australian timbers, it has a higher than average density giving it an increased resistance to everyday wear and tear.

The 3mm lamella can also be completely sanded and refinished giving you peace of mind for the future. We have consistently increased the scope of this range over the years and it now features 5 options in varying widths, finishes, and grades.

## Product Specification

<b>Structure</b> Engineered	<b>Width</b> 130mm   136mm   180mm
<b>Surface Finish</b> Satin Lacquer   Matte Brushed Lacquer	<b>Length</b> Random up to 2.1m
<b>Edge</b> Square	<b>Profile</b> 5G Licenced Click System   Tongue and Groove
<b>Thickness</b> 14mm	



<b>Project</b> Churchlands Residence	<b>Specifications</b> 180mm x 14mm
<b>Product</b> NSW Blackbutt	<b>Finish</b> Matte Brushed





**Grade** Standard & Better

**Finish** Matte Brushed Lacquer

**Edge** Square

**Thickness** 14mm

**Width** 180mm

**Length** Random up to 2.1m

**Profile** Tongue & Groove



**Grade** Standard & Better

**Finish** Satin Lacquer

**Edge** Square

**Thickness** 14mm

**Width** 180mm

**Length** Random up to 2.1m

**Profile** Tongue & Groove



**Grade** Standard & Better

**Finish** Satin Lacquer

**Edge** Square

**Thickness** 14mm

**Width** 130mm

**Length** Random up to 2.1m

**Profile** Tongue & Groove



**Grade** Standard & Better

**Finish** Satin Lacquer

**Edge** Square

**Thickness** 14mm

**Width** 136mm

**Length** Random up to 2.1m

**Profile** 5G Licensed Click System



**Grade** Character

**Finish** Satin Lacquer

**Edge** Square

**Thickness** 14mm

**Width** 180mm

**Length** Random up to 2.1m

**Profile** Tongue & Groove



**Grade** Character

**Finish** Satin Lacquer

**Edge** Square

**Thickness** 14mm

**Width** 130mm

**Length** Random up to 2.1m

**Profile** Tongue & Groove



**Project** Bedford Residence

**Product** NSW Blackbutt

**Specifications** 180 x 14mm

**Finish** Satin Lacquer



# Manjimup Jarrah

Undeniably West Australian, Jarrah has been gracing the floors of local homes for generations. It is unlikely that it will ever become “trendy” but that is what we love about it. The connection to our local landscape felt when walking into a home with Jarrah installed simply can’t be duplicated by another species of timber. Available in multiple widths and finishes we are also incredibly proud to have manufactured the world’s first recycled engineered Jarrah sourced directly from the historic Dalgety Woolstores in Fremantle.

## Product Specification

<b>Structure</b> Engineered
<b>Surface Finish</b> Satin Lacquer   Japan Black UV Oil   Unfinished
<b>Edge</b> Square
<b>Thickness</b> 14mm   20mm

<b>Width</b> 130mm   180mm   200mm
<b>Length</b> Random up to 2.2m   Random up to 3.8m
<b>Profile</b> Tongue & Groove



<b>Project</b> Loam Showroom
<b>Product</b> Recycled Jarrah

<b>Specifications</b> 200mm x 20mm
<b>Architect</b> Element WA





**Grade** Standard & Better

**Finish** Japan Black UV Oil

**Edge** Square

**Thickness** 14mm

**Width** 180mm

**Length** Random up to 2.1m

**Profile** Tongue & Groove



**Grade** Recycled

**Finish** Unfinished

**Edge** Square

**Thickness** 20mm

**Width** 200mm

**Length** Random up to 3.8m

**Profile** Tongue & Groove



**Grade** Standard & Better

**Finish** Satin Lacquer

**Edge** Square

**Thickness** 14mm

**Width** 180mm

**Length** Random up to 2.1m

**Profile** Tongue & Groove



**Grade** Standard & Better

**Finish** Satin Lacquer

**Edge** Square

**Thickness** 14mm

**Width** 130mm

**Length** Random up to 2.1m

**Profile** Tongue & Groove



**Project** Cottesloe Residence 2.0

**Product** Jarrah

**Specifications** 130 x 14mm

**Finish** Satin Lacquer





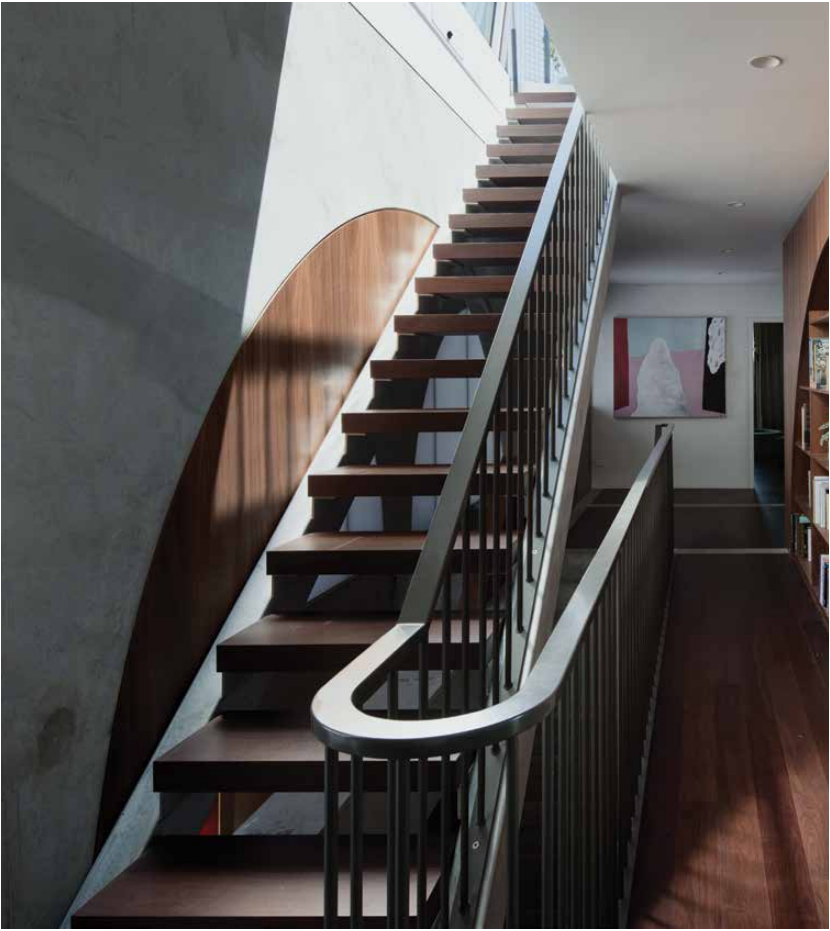
CASE STUDY

QT Hotel

Range	Signature Australian Range
Grade	Standard & Better
Finish	Satin Lacquer
Architect	Candalepas + Associates   Nic Graham + Associates   Indyk Architects
Length	Random up to 2.1m
Width	130mm
Thickness	14mm
Edge	Square







**CASE STUDY**

North Perth  
Residence 2.0

<b>Range</b>	Signature Australian Range
<b>Grade</b>	Standard & Better
<b>Finish</b>	Japan Black
<b>Architect</b>	Nic Brundson Architects
<b>Length</b>	Random up to 2.1m
<b>Width</b>	130mm
<b>Thickness</b>	14mm
<b>Edge</b>	Square

Australian Institute of Architects WA - Best New House  
Australian Institute of Architects WA - Best Interior









# NSW Spotted Gum

Featuring a gorgeous mix of colours and grain patterns, Spotted Gum undoubtedly creates warm and inviting spaces wherever it is used. Even harder than Blackbutt, it has a class leading resistance to everyday wear and tear.

The 3mm lamella can also be completely sanded and refinished in giving you peace of mind for the future. We have consistently increased the scope of this range over the years and it now features 5 options in varying widths, finishes, and grades to cater for any style.

## Product Specification

<b>Structure</b> Engineered	<b>Width</b> 130mm   136mm   180mm
<b>Surface Finish</b> Satin Lacquer   Matte Brushed Lacquer	<b>Length</b> Random up to 2.2m
<b>Edge</b> Square	<b>Profile</b> 5G Licenced Click System   Tongue and Groove
<b>Thickness</b> 14mm	



<b>Project</b> Yokine Residence	<b>Specifications</b> 180mm x 14mm
<b>Product</b> Spotted Gum	<b>Finish</b> Matte Brushed Lacquer





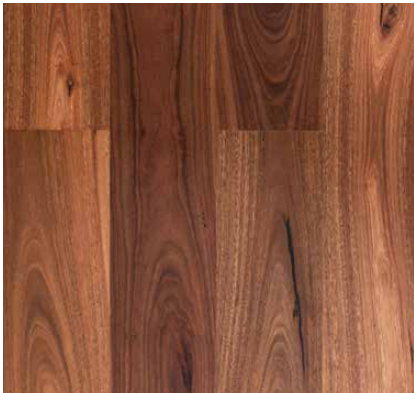
<b>Grade</b> Standard & Better
<b>Finish</b> Matte Brushed Lacquer
<b>Edge</b> Square
<b>Thickness</b> 14mm
<b>Width</b> 180mm
<b>Length</b> Random up to 2.1m
<b>Profile</b> Tongue & Groove



<b>Grade</b> Standard & Better
<b>Finish</b> Matte Brushed
<b>Edge</b> Square
<b>Thickness</b> 14mm
<b>Width</b> 130mm
<b>Length</b> Random up to 2.1m
<b>Profile</b> Tongue & Groove



<b>Grade</b> Standard & Better
<b>Finish</b> Satin Lacquer
<b>Edge</b> Square
<b>Thickness</b> 14mm
<b>Width</b> 180mm
<b>Length</b> Random up to 2.1m
<b>Profile</b> Tongue & Groove



<b>Grade</b> Standard & Better
<b>Finish</b> Satin Lacquer
<b>Edge</b> Square
<b>Thickness</b> 14mm
<b>Width</b> 130mm
<b>Length</b> Random up to 2.1m
<b>Profile</b> Tongue & Groove



<b>Grade</b> Standard & Better
<b>Finish</b> Satin Lacquer
<b>Edge</b> Square
<b>Thickness</b> 14mm
<b>Width</b> 136mm
<b>Length</b> Random up to 2.1m
<b>Profile</b> 5G Licensed Click System



<b>Grade</b> Character
<b>Finish</b> Satin Lacquer
<b>Edge</b> Square
<b>Thickness</b> 14mm
<b>Width</b> 180mm
<b>Length</b> Random up to 2.1m
<b>Profile</b> Tongue & Groove



<b>Grade</b> Character
<b>Finish</b> Satin Lacquer
<b>Edge</b> Square
<b>Thickness</b> 14mm
<b>Width</b> 130mm
<b>Length</b> Random up to 2.1m
<b>Profile</b> Tongue & Groove



<b>Project</b> Shenton Park Residence
<b>Product</b> Spotted Gum

<b>Specifications</b> 180mm x 14mm
<b>Finish</b> Satin Lacquer





CASE STUDY

Yokine  
Residence

Species	NSW Spotted Gum
Grade	Standard & Better
Finish	Matte Brushed Lacquer
Length	Random up to 2.1m
Width	180mm
Thickness	14mm
Edge	Square







CASE STUDY

King Street  
Residence

Species	NSW Spotted Gum
Grade	Standard & Better
Finish	Matte Brushed Lacquer
Architect	David Barr Architects
Length	Random up to 2.1m
Width	180mm
Thickness	14mm
Edge	Square







Solid French Oak



# Plank

We are one of Perth’s largest suppliers of solid French Oak. The feedstock lumber is sourced from a Forest Stewardship Council certified mill in the Burgundy region of France and kiln dried in Germany, guaranteeing that this precious natural resource is treated with the respect it deserves.

Available in strip flooring up to 4.5 metres long, block Herringbone, custom made Chevron or Versailles panels, the options are extensive. Installed unfinished and uniquely suited to stain applications and various coating procedures, these products truly allow for a floor to be designed from the ground up, guaranteeing that every element of the design brief is adhered to.

## Product Specification

\*We can provide custom sizes on request

<b>Structure</b>	Solid French Oak
<b>Surface Finish</b>	Unfinished
<b>Edge</b>	Square
<b>Thickness</b>	18mm

<b>Width</b>	180mm
<b>Length</b>	Random up to 2.5m*
<b>Profile</b>	Tongue & Groove
<b>Pack Size</b>	Varies*



<b>Project</b>	Mandurah Residence
<b>Product</b>	Solid French Oak

<b>Specifications</b>	180mm x 18mm
<b>Finish</b>	Lacquer Satin



# Parquetry

## Product Specification

**Structure** Solid French Oak

**Surface Finish** Unfinished

**Edge** Square

**Thickness** 15mm | 18mm

**Width** 90mm | 120mm

**Length** 450mm | 600mm

**Profile** Tongue & Groove | Block

**Pack Size** Varies



**Project** Churchlands Residence

**Product** Solid French Oak

**Specifications** 600mm x 120mm

**Finish** Loba Invisible Lacquer





CASE STUDY

InterContinental Hotel

Range	Solid Parquetry
Grade	Standard & Better
Finish	Satin Lacquer
Architect	Woods Bagot Architects
Builder	Built
Length	600mm
Width	120mm
Thickness	18mm
Edge	Square







CASE STUDY

The Vale  
and Brasserie

Range	Solid French Oak
Finish	Unfinished
Thickness	15mm   18mm
Width	90mm   120mm
Length	450mm   600mm
Profile	Tongue & Groove   Block
PackSize	Varies







Vinyl



# V Tech Hybrid

Hybrid vinyl flooring has exploded in popularity over the past few years. It is designed to tick all the boxes for a family friendly flooring option: Hardwearing, resistant to moisture and cost effective. Our range of ten colours features contemporary Oak colours as well as meticulously crafted representations of Spotted Gum and Blackbutt. These ultra realistic patterns are complemented by an extra wide and long board format that suits a wide variety of layouts.

## Product Specification

<b>Structure</b> Vinyl Hybrid	<b>Width</b> 220mm
<b>Surface Finish</b> Embossed   UV Coating	<b>Length</b> 1510mm
<b>Edge</b> Micro Bevelled	<b>Profile</b> Drop Lock Click System
<b>Thickness</b> 5mm	<b>Pack Size</b> 1.993m²



<b>Project</b> McGrath Nicol Head Office	<b>Colour</b> Nantucket
<b>Product</b> V-Tech Hybrid	<b>Architect</b> IA Design





Barn Oak



Blackbutt



Briard



Cape Cod



Grey Stone



Harold



Nantucket



Spotted Gum



Sudbury



Woodland



**Project** Arthouse Apartments

**Builder** PACT Construction

**Colour** Cape Cod

**Architect** Hillam Architects



# V Tech Tundra

## Product Specification

<b>Structure</b> Vinyl Hybrid	<b>Width</b> 228mm
<b>Surface Finish</b> Embossed   UV Coating	<b>Length</b> 1828mm
<b>Edge</b> Micro Bevelled	<b>Profile</b> Drop Lock Click System
<b>Thickness</b> 6mm	<b>Pack Size</b> 1.67m <sup>2</sup>



Hamilton



Pinnacle



Casper



Frankland



Nomad



Waterloo







# Warranty

<b>Domestic</b>	Lifetime Structural
<b>Commercial</b>	10 Years Structural

# Technical

Full installation instructions, warranty, care and maintenance guidelines can be downloaded from [woodpeckerflooring.com.au](http://woodpeckerflooring.com.au)



