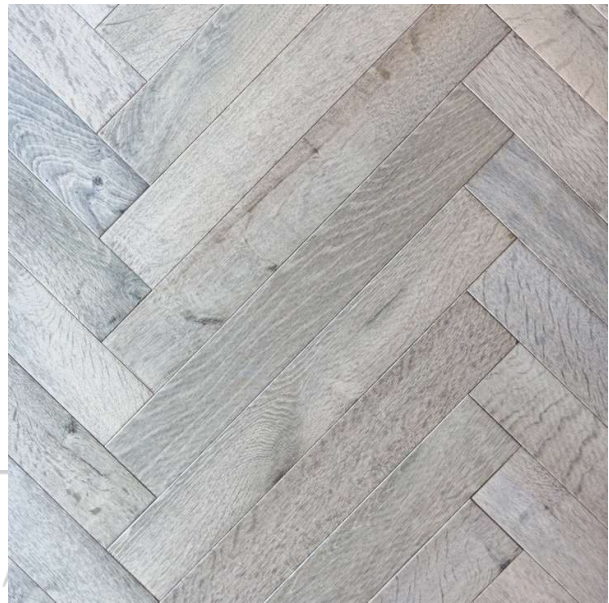


## TECHNICAL DATA SHEET

### ENG-HE-DRI SIGNATURE OAK RANGE: DRIFTWOOD

#### PRODUCT SPECIFICATIONS

PRODUCT RANGE	SIGNATURE OAK RANGE
COLOUR	DRIFTWOOD
PRODUCT CODE	ENG-HE-DRI
CONSTRUCTION	MULTI-LAYERED ENGINEERED
BACKING	EUCALYPTUS
SPECIES	EUROPEAN OAK
PATTERN	1 STRIP
BOX SIZE	0.448m <sup>2</sup>
EDGE	BEVEL
PROFILE	TONGUE AND GROOVE
FINISH	10% MATTE – HARDWAX
TOP LAYER	4mm EUROPEAN OAK LAMELLA
THICKNESS	15mm
WIDTH	80mm
LENGTH	560mm



The photograph used in this sheet is intended as an illustration. It does not provide any indication of grading. Colours will vary between batches in stock.

#### INSTALLATION METHODS

DIRECT STICK	YES
FLOATING ON UNDERLAY	NO
OVER UNDERFLOOR HEATING	YES

#### WARRANTY

RESIDENTIAL	LIFETIME STRUCTURAL
COMMERCIAL	10 YEARS STRUCTURAL

#### AUSTRALIAN STANDARDS

ACOUSTIC RATING	DEPENDENT ON UNDERLAY
SLIP RATING AS 4586-2013	P3
FORMELDELHYDE RATING	E1
CRITICAL HEAT FLUX (CHF) MEAN AS/ISO 9239.1-2003	4.6 kW/m <sup>2</sup>
JANKA HARDNESS RATING	1120

